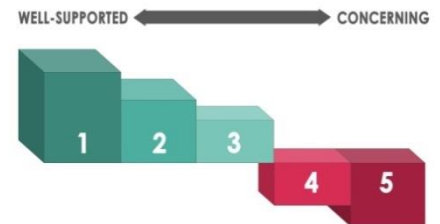


The California Department of Social Services (CDSS) recently released an [All County Information Notice \(ACIN\)](#) on the requirements for trauma-informed care (TIC) for Short-Term Residential Therapeutic Programs (STRTPs) and Foster Family Agencies (FFAs), as part of the CDSS's efforts to implement [Continuum of Care Reform](#). In the ACIN, the California Evidence-Based Clearinghouse (CEBC; www.cebc4cw.org) is named as a resource for identifying TIC models that STRTPs and FFAs can implement in order to meet the CDSS interim licensing requirements.

What is the CEBC?

The mission of the CEBC is to advance the effective implementation of evidence-based practices for children and families involved in the child welfare system. The CEBC reviews the published, peer-reviewed research evidence for intervention and prevention programs relevant to children, youth, and parents who are involved in the child welfare system, and gives each program a simple rating on the [CEBC Scientific Rating Scale](#) based on the effectiveness of the program. Not all programs listed on the CEBC website are "evidence-based."



CEBC Webinars on Trauma Topics

"So Much Trauma, So Many Interventions: How Do We Choose?"

- Reviews the fundamental characteristics of evidence-based trauma treatments (Part One) and presents considerations when making decisions about which intervention is most appropriate for a client (Part Two).

Trauma-Informed Mental Health Assessment Process (TI-MHAP)

- Reviews the core components of TI-MHAP and ways participants can integrate this process into their current assessment protocol.

What Programs on the CEBC are Trauma-Informed?

The CEBC has a [Trauma Treatment \(Child & Adolescent\)](#) topic area, which divides programs into two separate levels:

- [Client-Level Treatments](#) – Includes clinical interventions designed to help an individual process their trauma and learn how to cope with the feelings associated with the experience. The ACIN lists [Risk Reduction through Family Therapy](#) as an example TIC program from this level of treatment.
- [Systems-Level Treatments](#) – Includes programs for service providers and organizations designed to create a therapeutic environment that is more conducive for clients who have experienced trauma, reducing the risk of retraumatization by service providers or the organization (i.e., provide TIC). The ACIN lists [Sanctuary Model](#) as an example TIC program from this level of treatment.

Several other CEBC topic areas contain programs which also include components that address the organizational climate and culture to support TIC. For example, the ACIN lists [Children & Residential Experiences \(CARE\)](#), which is located in the [Higher Level](#)

[Placement](#) topic area, and [WisdomPath Way Reparative Parenting Approach \(WPW RP Approach\)](#), which is in the [Alternatives to Long-Term Residential Care Programs](#) topic area, as examples of TIC programs. The CEBC has identified additional programs, relevant to residential settings, with TIC components. These include:

- [The 3-5-7 Model®](#) (Casework Practice)
- [ARC Reflections](#) (Resource Parent Programs)
- [Collaborative Problem Solving®](#) (Disruptive Behavior Treatment)
- [Courtney's House](#) (Commercial Sexual Exploitation of Children/Adolescents)
- [Enhanced MiTEAM Practice Model](#) (Child Welfare Workforce Development)
- [Family Alternatives](#) (Youth Transitioning Into Adulthood)
- [FosterParentCollege.com®](#) (Resource Parent Programs)
- [Hope House](#) (Commercial Sexual Exploitation of Children/Adolescents)
- [KEEP](#) (Multiple Topic Areas)
- [The Mandt System®](#) (Behavioral Management for Adolescents)
- [Mockingbird Family Model](#) (Multiple Topic Areas)

***Disclaimer:** The CEBC does not endorse any one program and does not guarantee that the models listed here will meet CDSS licensing requirements. Agencies should consult with their CDSS licensing representative prior to program adoption.*

- Phoenix House Academy (Higher Level of Placement)
- Pressley Ridge Treatment Foster Care (Higher Level of Placement)
- PRIDE Model of Practice (Multiple Topic Areas)
- Resource Parent Curriculum (Resource Parent Programs)
- Teen Parenting Service Network (Teen Pregnancy Services)
- Threshold Mothers Project TLP (Youth Transitioning Into Adulthood)
- Together Facing the Challenge (Resource Parent Programs)
- Transition to Independence Process (Youth Transitioning Into Adulthood)
- Trauma Informed PS-MAPP (Multiple Topic Areas)
- Trauma-Integrative Treatment Foster Care (Resource Parent Programs)
- Trauma Systems Therapy - Foster Care (Resource Parent Programs)

Which TIC Program Should My Agency Adopt?

A TIC program’s scientific rating should not be the sole factor in making a decision to adopt a program. A program with a lower rating may be a better fit for your agency than one with more research evidence. For example, some programs on the CEBC website are labeled *Not Able to Be Rated* due to a lack of research evidence OR their research evidence does not meet the CEBC Scientific Rating Scale criteria; however, these programs should not be completely disqualified from an agency’s consideration. Watch the recorded webinar *Looking Beyond the Numbers* to learn more (link in right box).

To determine which TIC program is a better fit, the CEBC encourages agencies to read the CEBC’s *Selecting and Implementing Evidence-Based Practices: A Guide for Child and Family Serving Systems* and/or watch the two recorded webinars on this CEBC guide (links in right box above). Two of the resources contained within the guide are the *Selection Guide for EBPs* and its companion *Selection Guide Worksheet*, which are intended to help agencies compare potential programs across important selection domains and inform their decision on which program to adopt.

CEBC Webinars on Program Selection & Implementation Topics

Looking Beyond the Numbers

- Better understand how you can apply the CEBC Scientific Rating Scale to your decision to adopt a trauma-informed care model.

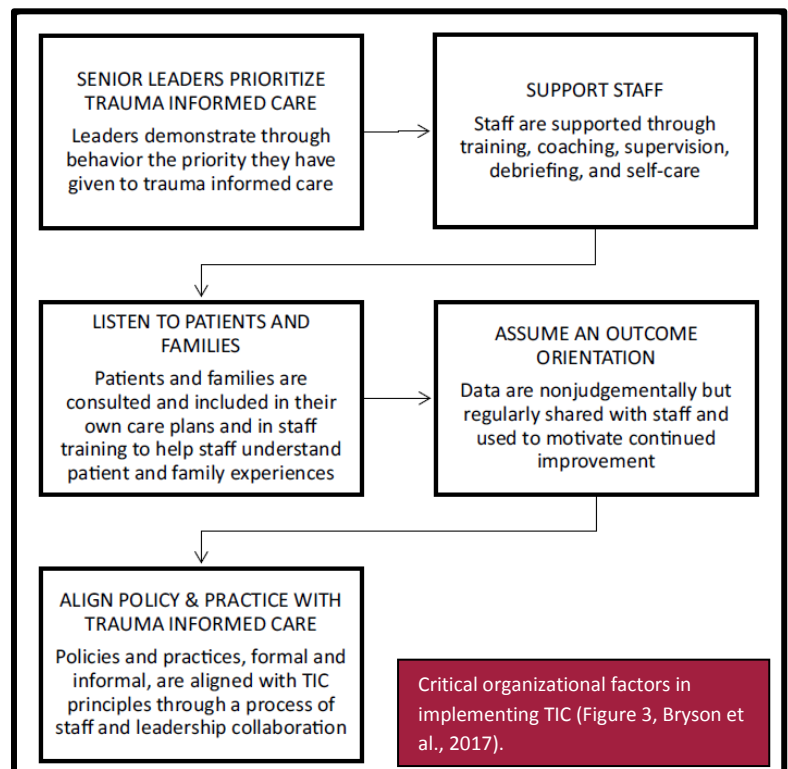
Using the CEBC Selection & Implementation Guide: How to Apply the Guide to Common Situations in Child Welfare

- Part One reviews the critical organizational factors for selecting & implementing new programs. Part Two presents CEBC implementation resources and how to overcome common barriers to implementation.

How Can My Agency Support the Implementation & Sustainability of a TIC Program?

Any type of organizational change requires an agency pay close attention to the implementation process so that the change has the intended impact and is sustainable. A recent published study conducted by Bryson et al. (2017) reviewed the published articles on TIC model implementation in residential and inpatient psychiatric settings in order to identify successful implementation strategies in these settings. The authors identified five critical organizational factors in implementing TIC including senior leadership commitment, sufficient staff support, amplifying the voices of patients and families, aligning policy and programing with TIC principles, and using data to help motivate change.

Furthermore, new CEBC users are encouraged to access the guide mentioned above for step-by-step guidance on successful program implementation and sustainability. Lastly, the CEBC also provides **free individualized training and technical assistance** to agencies located in California.



Bryson, S. A., Guavin, E., Jamieson, A., Rathgeber, M., Faulkner-Gibson, L., Bell, S.,... Burke, S. (2017). What are effective strategies for implementing trauma-informed care in youth inpatient psychiatric and residential treatment settings? A realistic systematic review. *International Journal of Mental Health Systems*, 11(36), 1-16. doi:10.1186/s13033-017-0137-3